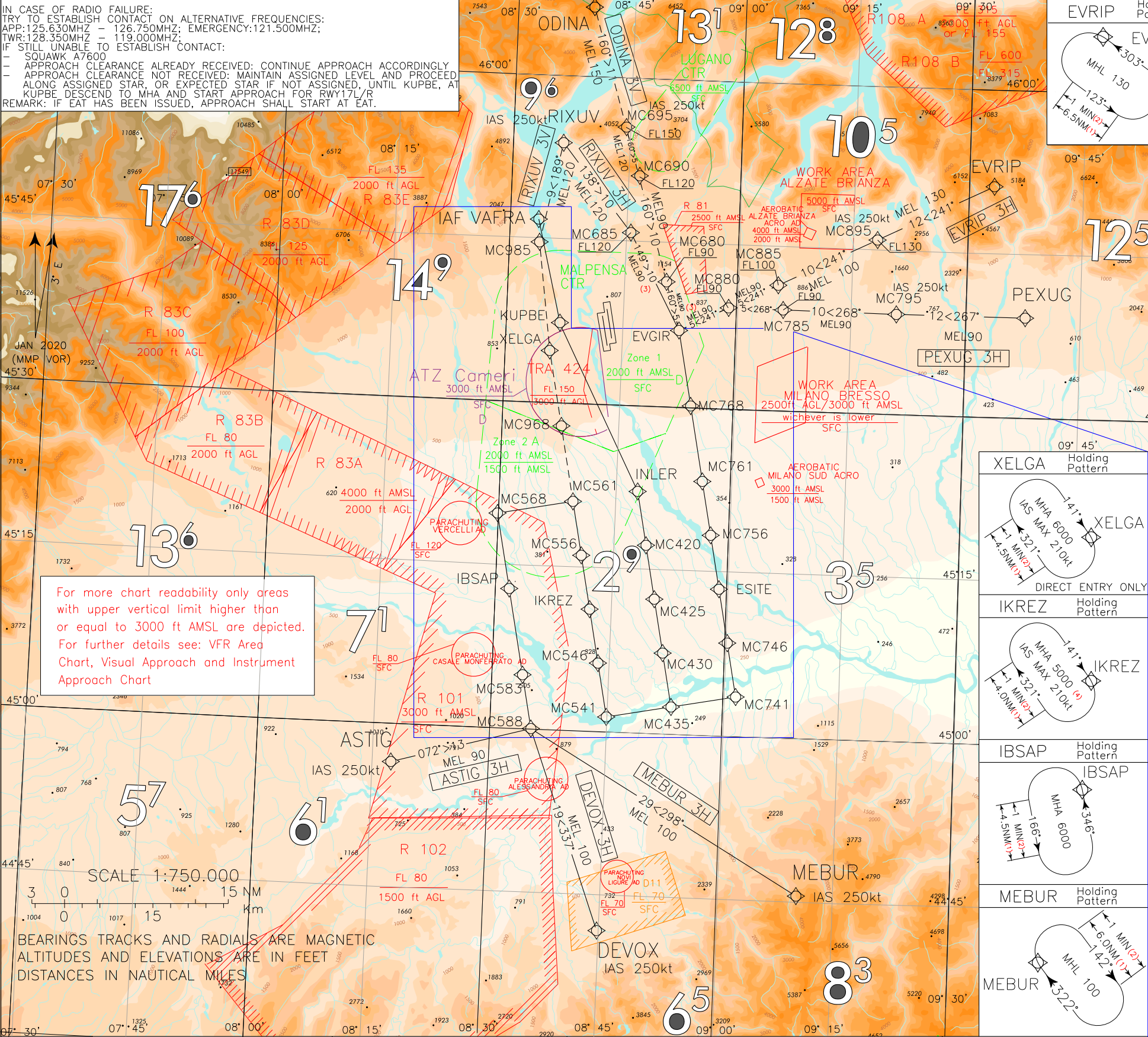
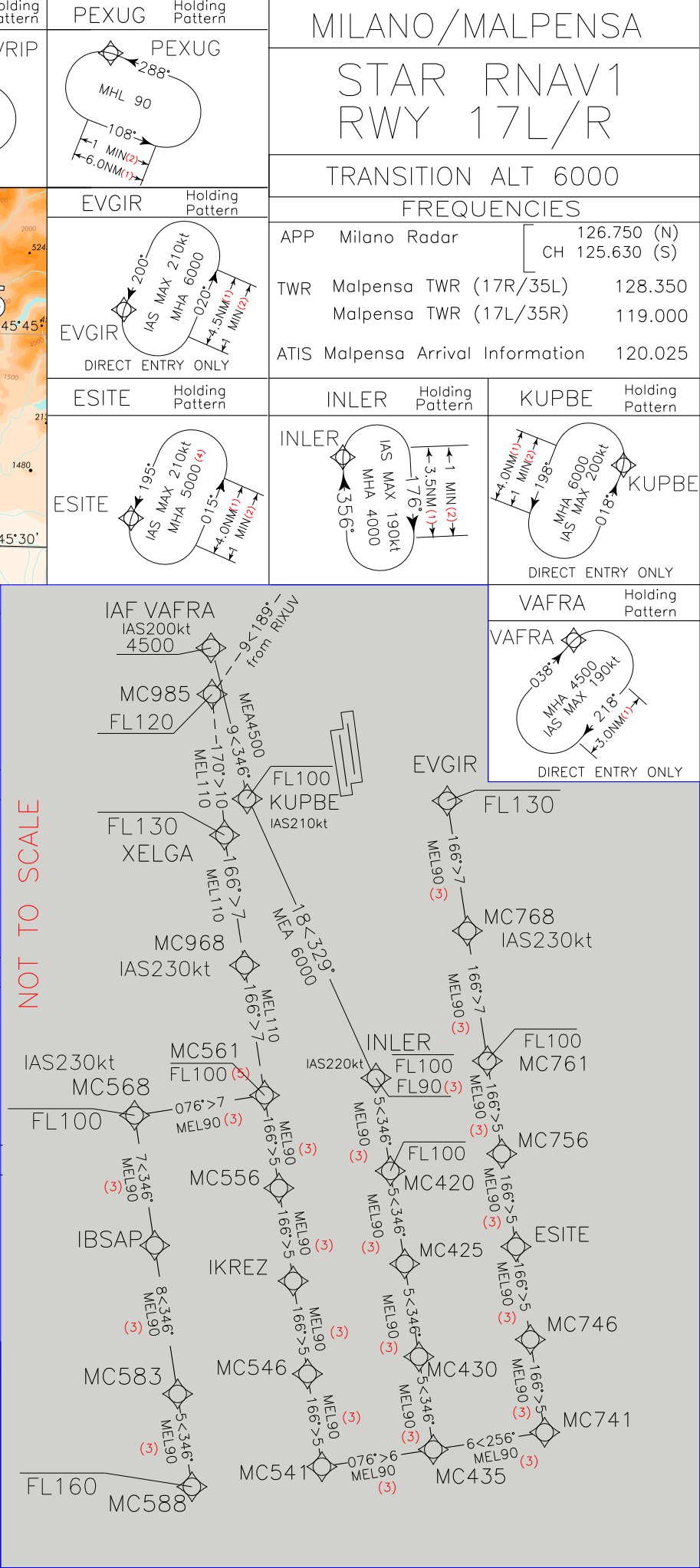


IN CASE OF RADIO FAILURE:  
TRY TO ESTABLISH CONTACT ON ALTERNATIVE FREQUENCIES:  
APP:125.630MHZ - 126.750MHZ; EMERGENCY:121.500MHZ;  
TWR:128.350MHZ - 119.000MHZ;  
IF STILL UNABLE TO ESTABLISH CONTACT:  
- SQUAWK A7600  
- APPROACH CLEARANCE ALREADY RECEIVED: CONTINUE APPROACH ACCORDINGLY  
- APPROACH CLEARANCE NOT RECEIVED: MAINTAIN ASSIGNED LEVEL AND PROCEED  
ALONG ASSIGNED STAR, OR EXPECTED STAR IF NOT ASSIGNED, UNTIL KUPBE, AT  
KUPBE DESCEND TO MHA AND START APPROACH FOR RWY17L/R  
REMARK: IF EAT HAS BEEN ISSUED, APPROACH SHALL START AT EAT.



LEGEND	REMARKS	ASTIG Holding Pattern	DEVOX Holding Pattern	MNM SECT ALT
<div>→ STAR</div> <div>→ STAR ATC DISCRETION</div>	(1) for RNAV system with Holding functionality (2) for RNAV system without Holding functionality (3) MEA 6000FT ATC Discretion (4) MHA 4000FT ATC Discretion (5) MAX LEVEL FL100 only for ASTIG 3H, DEVOX 3H and MEBUR 3H	<div>MHL 100</div> <div>084°</div>	<div>MHL 100</div> <div>018°</div>	25 NM ARP 10300



**MILANO /MALPENSA**  
**STAR RNAV 1 RWY17 L/R**

**ASTIG 3H**

Path Terminator	Waypoint Identifier	Fly Over	Course °M(°T)	Magnetic Variation	Distance (NM)	Turn Direction	Altitude (ft)	Speed Limit (kt)	Navigation Specification
IF	ASTIG	-	-	-	-	-	-	250	RNAV1
TF	MC588	-	072 (074.3)	-	13.2	-	-FL160 +FL90	-	RNAV1
TF	MC583	-	346 (349.0)	-	5.0	L	+FL90 (1)	-	RNAV1
TF	IBSAP	-	346 (348.9)	-	8.0	-	+FL90 (1)	-	RNAV1
TF	MC568	-	346 (348.9)	-	7.0	-	-FL100 +FL90 (1)	230	RNAV1
TF	MC561	-	076 (078.9)	-	7.0	R	-FL100 +FL90 (1)	-	RNAV1
TF	MC556	-	166 (169.0)	-	5.0	R	+FL90 (1)	-	RNAV1
TF	IKREZ	-	166 (169.0)	-	5.0	-	+FL90 (1)	-	RNAV1
TF	MC546	-	166 (169.0)	-	5.0	-	+FL90 (1)	-	RNAV1
TF	MC541	-	166 (169.0)	-	5.0	-	+FL90 (1)	-	RNAV1
TF	MC435	-	076 (079.1)	-	6.0	L	+FL90 (1)	-	RNAV1
TF	MC430	-	346 (349.1)	-	5.0	L	+FL90 (1)	-	RNAV1
TF	MC425	-	346 (349.1)	-	5.0	-	+FL90 (1)	-	RNAV1
TF	MC420	-	346 (349.1)	-	5.0	-	-FL100 +FL90 (1)	-	RNAV1
TF	INLER	-	346 (349.1)	-	5.0	-	-FL100 +FL90 (1)	220	RNAV1
TF	KUPBE	-	329 (331.8)	-	17.5		-FL100 +6000	210	RNAV1
TF	VAFRA	-	346 (348.9)	-	9.0	-	+4500	200	RNAV1

(1) +6000FT ATC discretion

**DEVOX 3H**

Path Terminator	Waypoint Identifier	Fly Over	Course °M(°T)	Magnetic Variation	Distance (NM)	Turn Direction	Altitude (ft)	Speed Limit (kt)	Navigation Specification
IF	DEVOX	-	-	-	-	-	-	250	RNAV1
TF	MC588	-	337 (339.8)	-	19.5	-	-FL160 +FL100	-	RNAV1
TF	MC583	-	346 (349.0)	-	5.0	-	+FL90 (1)	-	RNAV1
TF	IBSAP	-	346 (348.9)	-	8.0	-	+FL90 (1)	-	RNAV1
TF	MC568	-	346 (348.9)	-	7.0	-	-FL100 +FL90 (1)	230	RNAV1
TF	MC561	-	076 (078.9)	-	7.0	R	-FL100 +FL90 (1)	-	RNAV1
TF	MC556	-	166 (169.0)	-	5.0	R	+FL90 (1)	-	RNAV1
TF	IKREZ	-	166 (169.0)	-	5.0	-	+FL90 (1)	-	RNAV1
TF	MC546	-	166 (169.0)	-	5.0	-	+FL90 (1)	-	RNAV1
TF	MC541	-	166 (169.0)	-	5.0	-	+FL90 (1)	-	RNAV1
TF	MC435	-	076 (079.1)	-	6.0	L	+FL90 (1)	-	RNAV1
TF	MC430	-	346 (349.1)	-	5.0	L	+FL90 (1)	-	RNAV1
TF	MC425	-	346 (349.1)	-	5.0	-	+FL90 (1)	-	RNAV1
TF	MC420	-	346 (349.1)	-	5.0	-	-FL100 +FL90 (1)	-	RNAV1
TF	INLER	-	346 (349.1)	-	5.0	-	-FL100 +FL90 (1)	220	RNAV1
TF	KUPBE	-	329 (331.8)	-	17.5	-	-FL100 +6000	210	RNAV1
TF	VAFRA	-	346 (348.9)	-	9.0	-	+4500	200	RNAV1

(1) +6000FT ATC discretion

**EVRIIP 3H**

Path Terminator	Waypoint Identifier	Fly Over	Course °M(°T)	Magnetic Variation	Distance (NM)	Turn Direction	Altitude (ft)	Speed Limit (kt)	Navigation Specification
IF	EVRIIP	-	-	-	-	-	-	-	RNAV1
TF	MC895	-	241 (243.9)	-	11.9	-	+FL130	250	RNAV1
TF	MC885	-	241 (243.7)	-	10.0	-	+FL100	-	RNAV1
TF	MC880	-	241 (243.6)	-	5.0	-	+FL90	-	RNAV1
TF	EVGIR	-	241 (243.5)	-	5.0	-	-FL130 +FL90 (1)	-	RNAV1
TF	MC768	-	166 (169.1)	-	7.0	-	+FL90 (1)	230	RNAV1
TF	MC761	-	166 (169.2)	-	7.0	-	-FL100 +FL90 (1)	-	RNAV1
TF	MC756	-	166 (169.2)	-	5.0	-	+FL90 (1)	-	RNAV1
TF	ESITE	-	166 (169.2)	-	5.0	-	+FL90 (1)	-	RNAV1
TF	MC746	-	166 (169.2)	-	5.0	-	+FL90 (1)	-	RNAV1
TF	MC741	-	166 (169.2)	-	5.0	-	+FL90 (1)	-	RNAV1
TF	MC435	-	256 (259.2)	-	6.0	R	+FL90 (1)	-	RNAV1
TF	MC430	-	346 (349.1)	-	5.0	R	+FL90 (1)	-	RNAV1
TF	MC425	-	346 (349.1)	-	5.0	-	+FL90 (1)	-	RNAV1
TF	MC420	-	346 (349.1)	-	5.0	-	-FL100 +FL90 (1)	-	RNAV1
TF	INLER	-	346 (349.1)	-	5.0	-	-FL100 +FL90 (1)	220	RNAV1
TF	KUPBE	-	329 (331.8)	-	17.5		-FL100 +6000	210	RNAV1
TF	VAFRA	-	346 (348.9)	-	9.0	-	+4500	200	RNAV1

(1) +6000FT ATC discretion

**MEBUR 3H**

Path Terminator	Waypoint Identifier	Fly Over	Course °M(°T)	Magnetic Variation	Distance (NM)	Turn Direction	Altitude (ft)	Speed Limit (kt)	Navigation Specification
IF	MEBUR	-	-	-	-	-	-	250	RNAV1
TF	MC588	-	298 (300.4)	-	28.8	-	-FL160 +FL100	-	RNAV1
TF	MC583	-	346 (349.0)	-	5.0	-	+FL90 (1)	-	RNAV1
TF	IBSAP	-	346 (348.9)	-	8.0	-	+FL90 (1)	-	RNAV1
TF	MC568	-	346 (348.9)	-	7.0	-	-FL100 +FL90 (1)	230	RNAV1
TF	MC561	-	076 (078.9)	-	7.0	R	-FL100 +FL90 (1)	-	RNAV1
TF	MC556	-	166 (169.0)	-	5.0	R	+FL90 (1)	-	RNAV1
TF	IKREZ	-	166 (169.0)	-	5.0	-	+FL90 (1)	-	RNAV1
TF	MC546	-	166 (169.0)	-	5.0	-	+FL90 (1)	-	RNAV1
TF	MC541	-	166 (169.0)	-	5.0	-	+FL90 (1)	-	RNAV1
TF	MC435	-	076 (079.1)	-	6.0	L	+FL90 (1)	-	RNAV1
TF	MC430	-	346 (349.1)	-	5.0	L	+FL90 (1)	-	RNAV1
TF	MC425	-	346 (349.1)	-	5.0	-	+FL90 (1)	-	RNAV1
TF	MC420	-	346 (349.1)	-	5.0	-	-FL100 +FL90 (1)	-	RNAV1
TF	INLER	-	346 (349.1)	-	5.0	-	-FL100 +FL90 (1)	220	RNAV1
TF	KUPBE	-	329 (331.8)	-	17.5		-FL100 +6000	210	RNAV1
TF	VAFRA	-	346 (348.9)	-	9.0	-	+4500	200	RNAV1

(1) +6000FT ATC discretion

**ODINA 3V (ATC discretion)**

Path Terminator	Waypoint Identifier	Fly Over	Course °M(°T)	Magnetic Variation	Distance (NM)	Turn Direction	Altitude (ft)	Speed Limit (kt)	Navigation Specification
IF	ODINA	-	-	-	-	-	-	-	RNAV1
TF	MC695	-	160 (163.0)	-	10.5	-	+FL150	250	RNAV1
TF	MC690	-	160 (163.1)	-	5.0	-	+FL120	-	RNAV1
TF	MC680	-	160 (163.1)	-	10.0	-	+FL90	-	RNAV1
TF	EVGIR	-	160 (163.1)	-	5.0	-	-FL130 +FL90 (1)	-	RNAV1
TF	MC768	-	166 (169.1)	-	7.0	-	+FL90 (1)	230	RNAV1
TF	MC761	-	166 (169.2)	-	7.0	-	-FL100 +FL90 (1)	-	RNAV1
TF	MC756	-	166 (169.2)	-	5.0	-	+FL90 (1)	-	RNAV1
TF	ESITE	-	166 (169.2)	-	5.0	-	+FL90 (1)	-	RNAV1
TF	MC746	-	166 (169.2)	-	5.0	-	+FL90 (1)	-	RNAV1
TF	MC741	-	166 (169.2)	-	5.0	-	+FL90 (1)	-	RNAV1
TF	MC435	-	256 (259.2)	-	6.0	R	+FL90 (1)	-	RNAV1
TF	MC430	-	346 (349.1)	-	5.0	R	+FL90 (1)	-	RNAV1
TF	MC425	-	346 (349.1)	-	5.0	-	+FL90 (1)	-	RNAV1
TF	MC420	-	346 (349.1)	-	5.0	-	-FL100 +FL90 (1)	-	RNAV1
TF	INLER	-	346 (349.1)	-	5.0	-	-FL100 +FL90 (1)	220	RNAV1
TF	KUPBE	-	329 (331.8)	-	17.5		-FL100 +6000	210	RNAV1
TF	VAFRA	-	346 (348.9)	-	9.0	-	+4500	200	RNAV1

(1) +6000FT ATC discretion

## PEXUG 3H

Path Terminator	Waypoint Identifier	Fly Over	Course °M(°T)	Magnetic Variation	Distance (NM)	Turn Direction	Altitude (ft)	Speed Limit (kt)	Navigation Specification
IF	PEXUG	-	-	-	-	-	-	-	RNAV1
TF	MC795	-	267 (270.1)	-	11.8	-	+FL90	250	RNAV1
TF	MC785	-	268 (270.5)	-	10.4	-	+FL90	-	RNAV1
TF	MC880	-	268 (270.3)	-	5.0	-	+FL90	-	RNAV1
TF	EVGIR	-	241 (243.5)	-	5.0	-	-FL130 +FL90 (1)	-	RNAV1
TF	MC768	-	166 (169.1)	-	7.0	-	+FL90 (1)	230	RNAV1
TF	MC761	-	166 (169.2)	-	7.0	-	-FL100 +FL90 (1)	-	RNAV1
TF	MC756	-	166 (169.2)	-	5.0	-	+FL90 (1)	-	RNAV1
TF	ESITE	-	166 (169.2)	-	5.0	-	+FL90 (1)	-	RNAV1
TF	MC746	-	166 (169.2)	-	5.0	-	+FL90 (1)	-	RNAV1
TF	MC741	-	166 (169.2)	-	5.0	-	+FL90 (1)	-	RNAV1
TF	MC435	-	256 (259.2)	-	6.0	R	+FL90 (1)	-	RNAV1
TF	MC430	-	346 (349.1)	-	5.0	R	+FL90 (1)	-	RNAV1
TF	MC425	-	346 (349.1)	-	5.0	-	+FL90 (1)	-	RNAV1
TF	MC420	-	346 (349.1)	-	5.0	-	-FL100 +FL90 (1)	-	RNAV1
TF	INLER	-	346 (349.1)	-	5.0	-	-FL100 +FL90 (1)	220	RNAV1
TF	KUPBE	-	329 (331.8)	-	17.5		-FL100 +6000	210	RNAV1
TF	VAFRA	-	346 (348.9)	-	9.0	-	+4500	200	RNAV1

(1) +6000FT ATC discretion

**RIXUV 3H**

Path Terminator	Waypoint Identifier	Fly Over	Course °M(°T)	Magnetic Variation	Distance (NM)	Turn Direction	Altitude (ft)	Speed Limit (kt)	Navigation Specification
IF	RIXUV	-	-	-	-	-	-	250	RNAV1
TF	MC685	-	138 (140.9)	-	10.3	-	+FL120	-	RNAV1
TF	EVGIR	-	149 (151.6)	-	10.0	-	-FL130 +FL90 (1)	-	RNAV1
TF	MC768	-	166 (169.1)	-	7.0	-	+FL90 (1)	230	RNAV1
TF	MC761	-	166 (169.2)	-	7.0	-	-FL100 +FL90 (1)	-	RNAV1
TF	MC756	-	166 (169.2)	-	5.0	-	+FL90 (1)	-	RNAV1
TF	ESITE	-	166 (169.2)	-	5.0	-	+FL90 (1)	-	RNAV1
TF	MC746	-	166 (169.2)	-	5.0	-	+FL90 (1)	-	RNAV1
TF	MC741	-	166 (169.2)	-	5.0	-	+FL90 (1)	-	RNAV1
TF	MC435	-	256 (259.2)	-	6.0	R	+FL90 (1)	-	RNAV1
TF	MC430	-	346 (349.1)	-	5.0	R	+FL90 (1)	-	RNAV1
TF	MC425	-	346 (349.1)	-	5.0	-	+FL90 (1)	-	RNAV1
TF	MC420	-	346 (349.1)	-	5.0	-	-FL100 +FL90 (1)	-	RNAV1
TF	INLER	-	346 (349.1)	-	5.0	-	-FL100 +FL90 (1)	220	RNAV1
TF	KUPBE	-	329 (331.8)	-	17.5		-FL100 +6000	210	RNAV1
TF	VAFRA	-	346 (348.9)	-	9.0	-	+4500	200	RNAV1

(1) +6000FT ATC discretion



**RIXUV 3V (ATC discretion)**

Path Terminator	Waypoint Identifier	Fly Over	Course °M(°T)	Magnetic Variation	Distance (NM)	Turn Direction	Altitude (ft)	Speed Limit (kt)	Navigation Specification
IF	RIXUV	-	-	-	-	-	-	250	RNAV1
TF	MC985	-	189 (191.4)	-	9.3	-	+FL120	-	RNAV1
TF	XELGA	-	170 (172.4)	-	10.0	-	-FL130 +FL110	-	RNAV1
TF	MC968	-	166 (169.0)	-	7.0	-	+FL110	230	RNAV1
TF	MC561	-	166 (169.0)	-	7.0	-	+FL110	-	RNAV1
TF	MC556	-	166 (169.0)	-	5.0	-	+FL90 (1)	-	RNAV1
TF	IKREZ	-	166 (169.0)	-	5.0	-	+FL90 (1)	-	RNAV1
TF	MC546	-	166 (169.0)	-	5.0	-	+FL90 (1)	-	RNAV1
TF	MC541	-	166 (169.0)	-	5.0	-	+FL90 (1)	-	RNAV1
TF	MC435	-	076 (079.1)	-	6.0	L	+FL90 (1)	-	RNAV1
TF	MC430	-	346 (349.1)	-	5.0	L	+FL90 (1)	-	RNAV1
TF	MC425	-	346 (349.1)	-	5.0	-	+FL90 (1)	-	RNAV1
TF	MC420	-	346 (349.1)	-	5.0	-	-FL100 +FL90 (1)	-	RNAV1
TF	INLER	-	346 (349.1)	-	5.0	-	-FL100 +FL90 (1)	220	RNAV1
TF	KUPBE	-	329 (331.8)	-	17.5	-	-FL100 +6000	210	RNAV1
TF	VAFRA	-	346 (348.9)	-	9.0	-	+4500	200	RNAV1

(1) +6000FT ATC discretion

**HOLDING RNAV 1**

Path Terminator	Waypoint Identifier	Inbound Course °M (°T)	Leg Distance (NM) (1)	Timing(min.)/ Waypoint Distance (NM) (2)	Turn Direction	Minimum Altitude (FT)	Maximum Altitude (FL)	Speed Limit (kt)	Magnetic Variation (°)	Navigation Specification
HM	ASTIG	084 (087.0)	6.0	1.0/ -	L	+FL100	-	-	3	RNAV1
HM	DEVOX	018 (021.0)	6.0	1.0/ -	L	+FL100	-	-	3	RNAV1
HM (4)	EVGIR	200 (203.0)	4.5	1.0/ -	L	+6000	-	-210	3	RNAV1
HM	EVRIP	303 (306.0)	6.5	1.0/ -	L	+FL130	-	-	3	RNAV1
HM	IBSAP	346 (348.9)	4.5	1.0/ -	L	+6000	-	-	3	RNAV1
HM	INLER	356 (359.0)	3.5	1.0/ -	R	+4000	-	-190	3	RNAV1
HM	MEBUR	322 (325.0)	6.0	1.0/ -	R	+FL100	-	-	3	RNAV1
HM	ESITE	195 (198.0)	4.0	1.0/ -	L	+5000 (3)	-	-210	3	RNAV1
HM	IKREZ	141 (144.0)	4.0	1.0/ -	R	+5000 (3)	-	-210	3	RNAV1
HM (4)	KUPBE	018 (021.0)	4.0	1.0/ -	L	+6000	-	-200	3	RNAV1
HM	PEXUG	288 (291.0)	6.0	1.0/ -	L	+FL90	-	-	3	RNAV1
HM (4)	VAFRA	038 (041.0)	3.0	- / -	R	+4500	-	-190	3	RNAV1
HM (4)	XELGA	141 (144.0)	4.5	1.0/ -	R	+6000	-	-210	3	RNAV1

- (1) RNAV system with holding functionality  
(2) RNAV system without holding functionality  
(3) MHA 4000FT ATC discretion  
(4) Direct Entry Only

**WAYPOINT LIST**

<b>Waypoint Identifier</b>	<b>Coordinates</b>
MC420	45°17'15.67" N 008°49'20.14" E
MC425	45°12'21.00" N 008°50'40.41" E
MC430	45°07'26.31" N 008°52'00.44" E
MC435	45°02'31.60" N 008°53'20.24" E
MC541	45°01'23.49" N 008°45'01.43" E
MC546	45°06'18.10" N 008°43'40.95" E
MC556	45°16'07.26" N 008°40'59.27" E
MC561	45°21'01.81" N 008°39'38.09" E
MC568	45°19'41.13" N 008°29'53.51" E
MC583	45°04'57.79" N 008°33'58.89" E
MC588	45°00'03.27" N 008°35'20.06" E
MC680	45°41'50.53" N 008°50'32.55" E
MC685	45°45'51.66" N 008°45'50.46" E
MC690	45°51'24.73" N 008°46'23.38" E
MC695	45°56'11.80" N 008°44'18.25" E
MC741	45°03'39.07" N 009°01'39.11" E
MC746	45°08'33.88" N 009°00'19.99" E
MC756	45°18'23.43" N 008°57'41.08" E
MC761	45°23'18.18" N 008°56'21.28" E
MC768	45°30'10.79" N 008°54'29.17" E
MC785	45°39'16.19" N 009°06'07.05" E
MC795	45°39'12.00" N 009°20'55.00" E
MC880	45°39'17.52" N 008°58'59.2" E
MC885	45°41'31.29" N 009°05'22.34" E
MC895	45°45'57.72" N 009°18'10.09" E
MC968	45°27'54.18" N 008°37'44.29" E
MC985	45°44'41.31" N 008°33'56.69" E